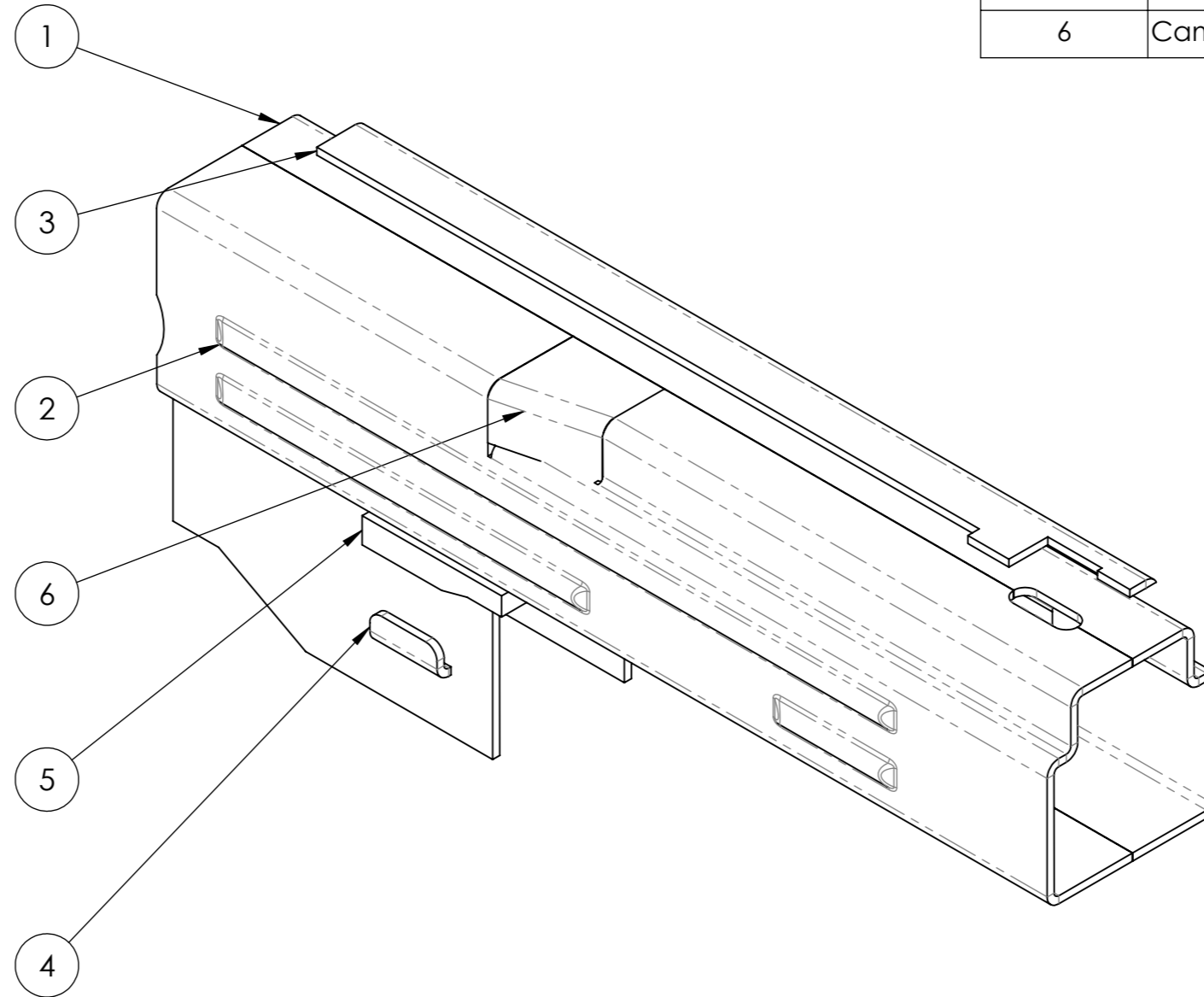
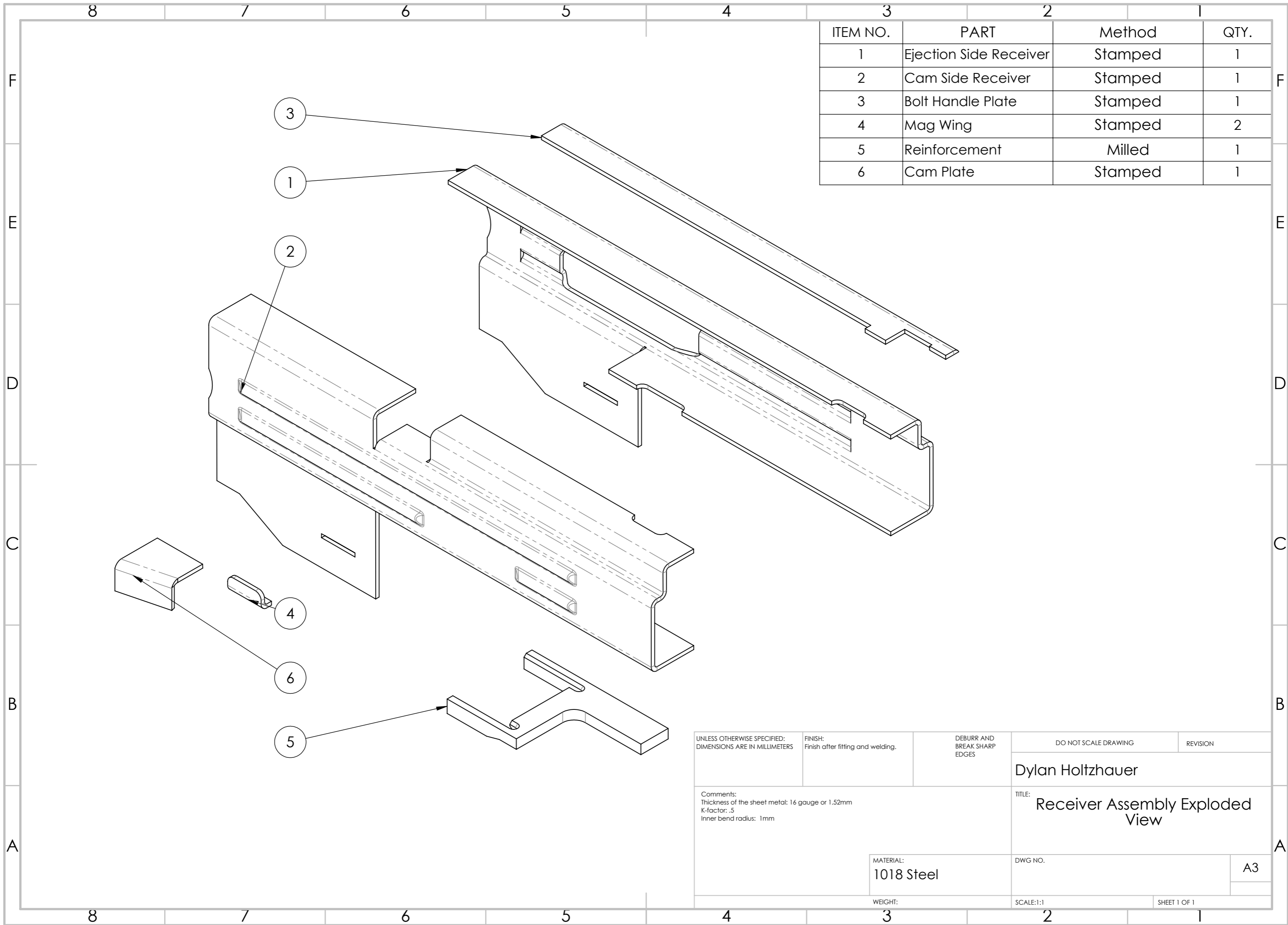


ITEM NO.	PART	Method	QTY.
1	Ejection Side Receiver	Stamped	1
2	Cam Side Receiver	Stamped	1
3	Bolt Handle Plate	Stamped	1
4	Mag Wing	Stamped	2
5	Reinforcement	Milled	1
6	Cam Plate	Stamped	1

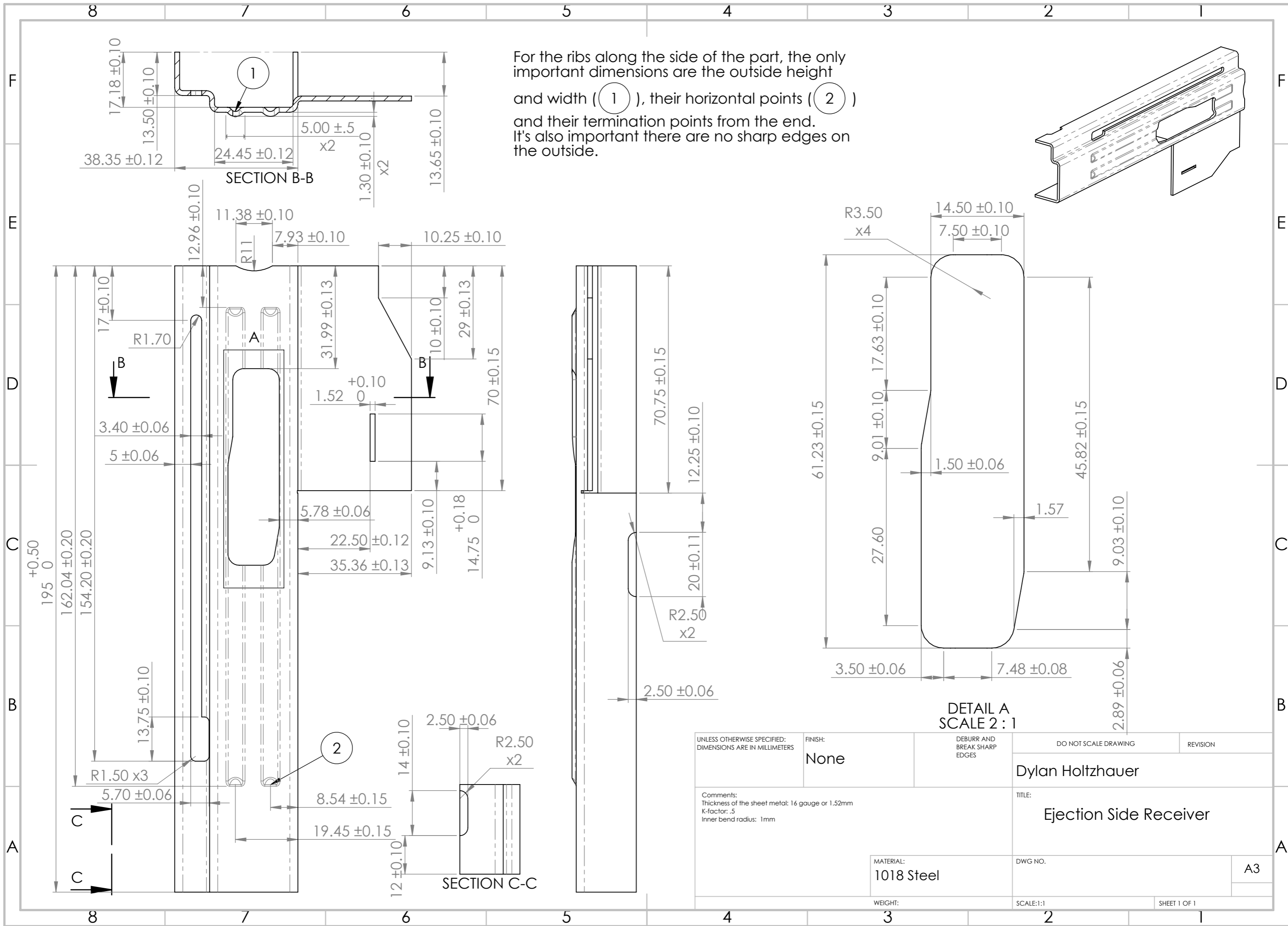


UNLESS OTHERWISE SPECIFIED: DIMENSIONS ARE IN MILLIMETERS	FINISH: Finish after fitting and welding.	DEBURR AND BREAK SHARP EDGES	DO NOT SCALE DRAWING	REVISION
			Dylan Holtzhauer	
Comments: Thickness of the sheet metal: 16 gauge or 1.52mm K-factor: .5 Inner bend radius: 1mm			TITLE: Receiver Assembly	
			MATERIAL: 1018 Steel	DWG NO.
WEIGHT:			SCALE:1:1	SHEET 1 OF 1

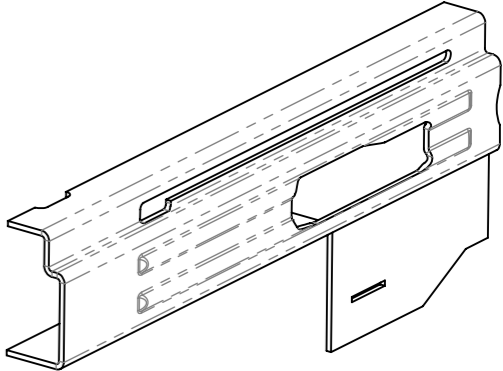


ITEM NO.	PART	Method	QTY.
1	Ejection Side Receiver	Stamped	1
2	Cam Side Receiver	Stamped	1
3	Bolt Handle Plate	Stamped	1
4	Mag Wing	Stamped	2
5	Reinforcement	Milled	1
6	Cam Plate	Stamped	1

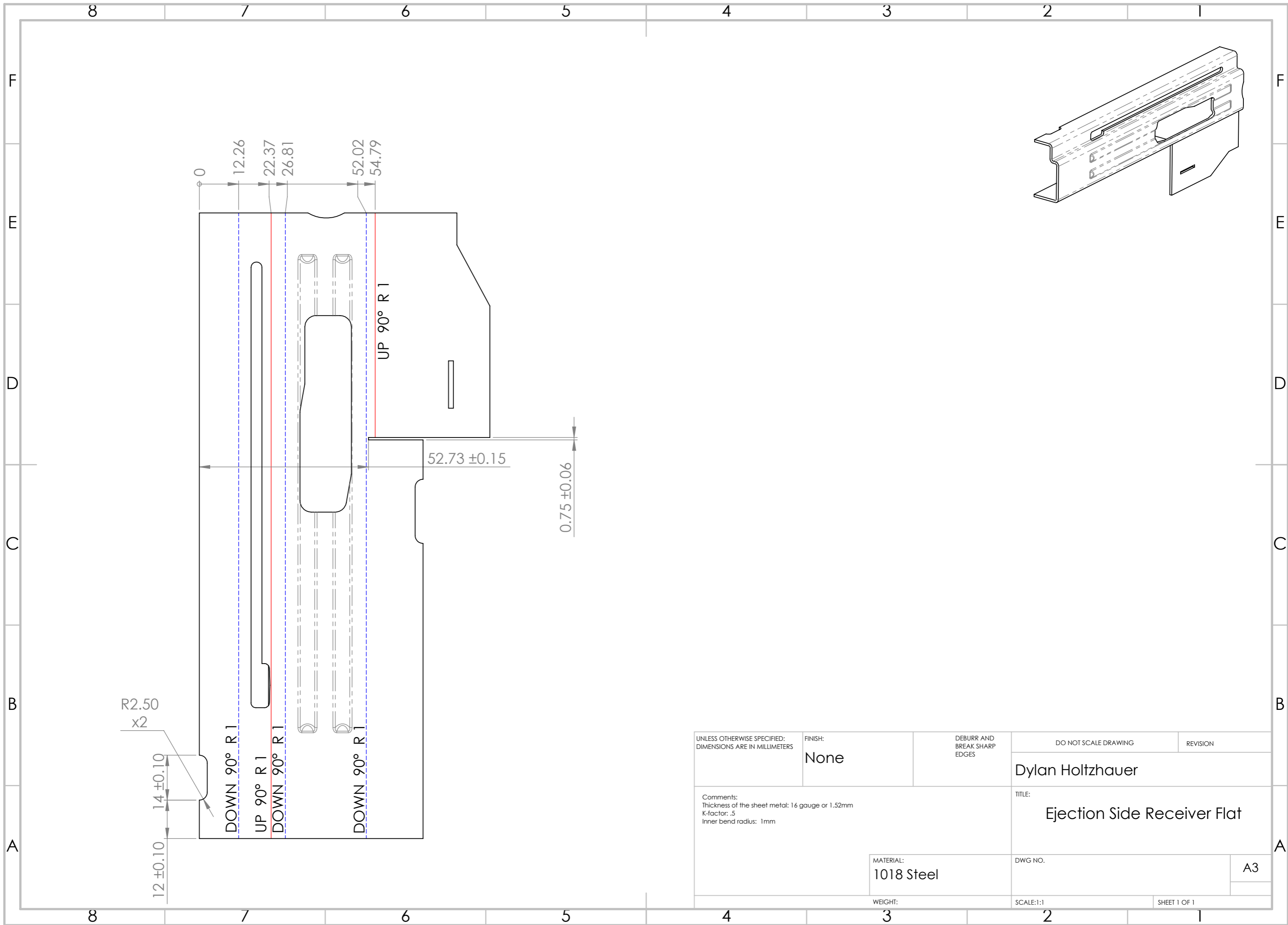
UNLESS OTHERWISE SPECIFIED: DIMENSIONS ARE IN MILLIMETERS	FINISH: Finish after fitting and welding.	DEBURR AND BREAK SHARP EDGES	DO NOT SCALE DRAWING	REVISION
			Dylan Holtzhauer	
Comments: Thickness of the sheet metal: 16 gauge or 1.52mm K-factor: .5 Inner bend radius: 1mm			TITLE: Receiver Assembly Exploded View	
			MATERIAL: 1018 Steel	DWG NO. A3
WEIGHT:			SCALE:1:1	SHEET 1 OF 1



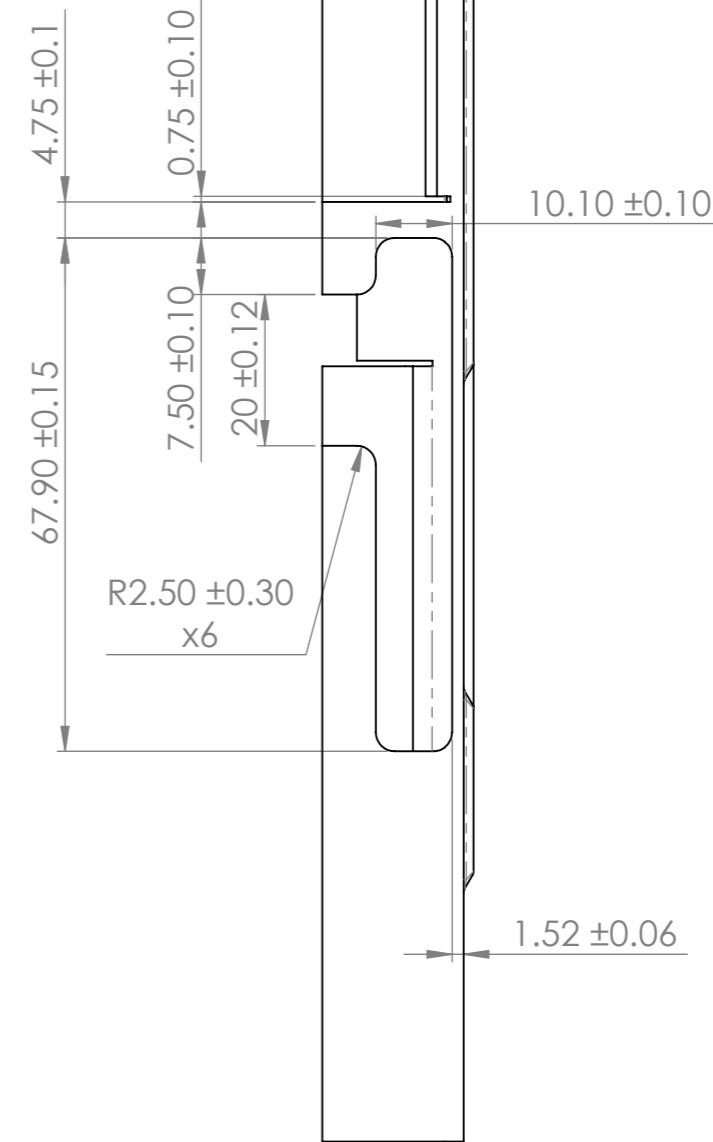
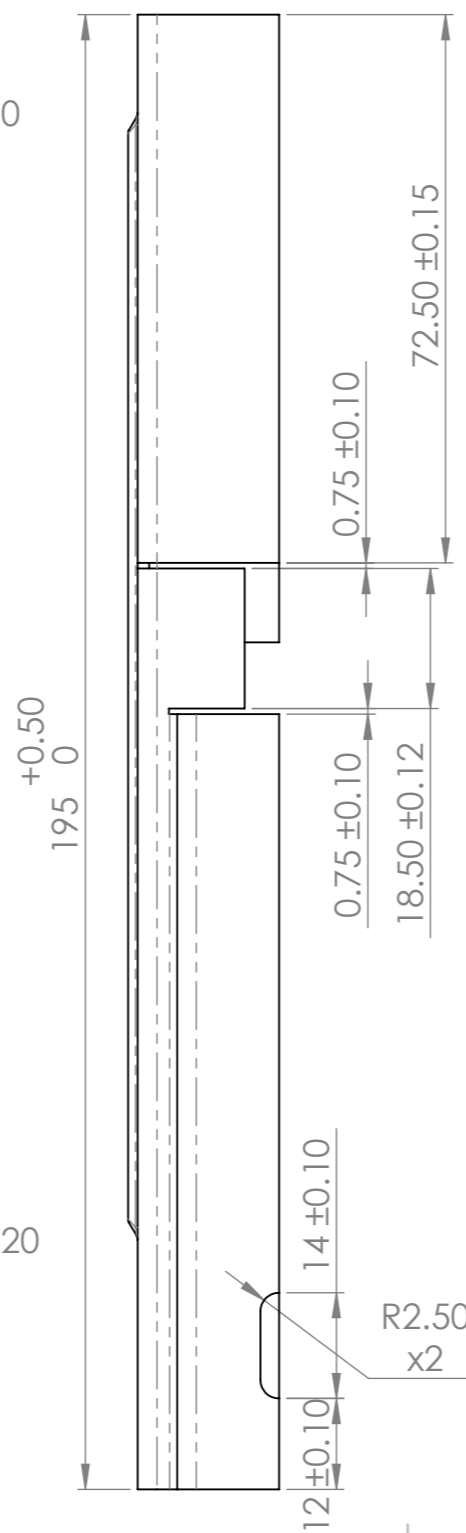
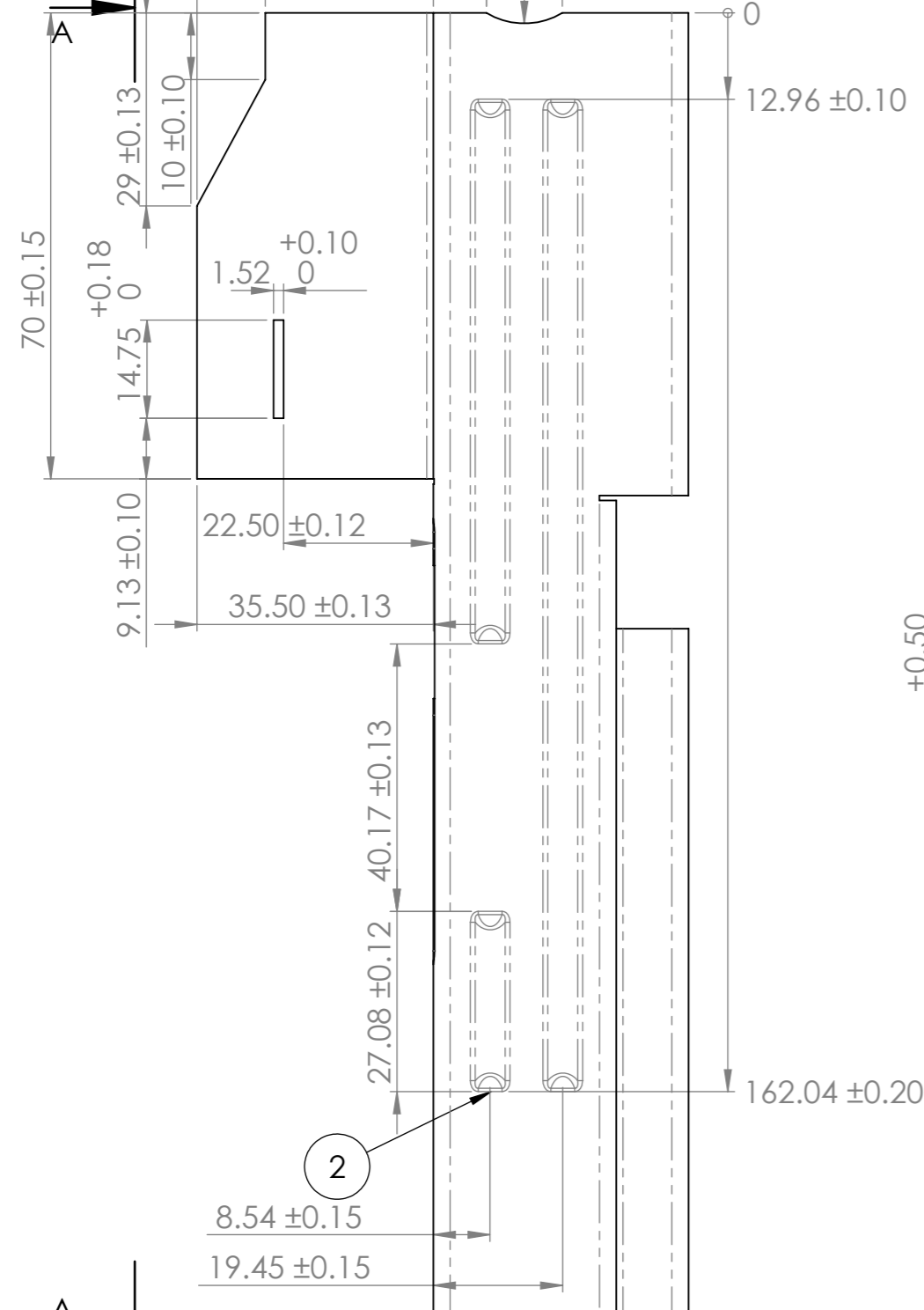
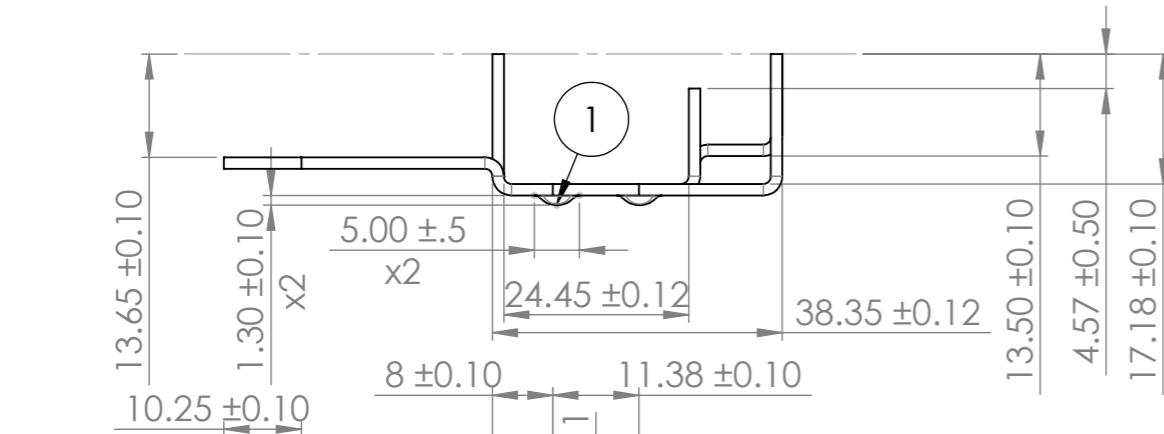
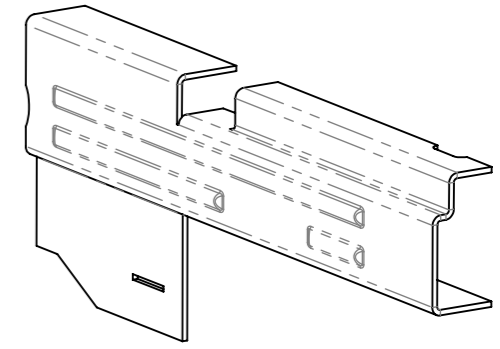
For the ribs along the side of the part, the only important dimensions are the outside height and width (1), their horizontal points (2) and their termination points from the end. It's also important there are no sharp edges on the outside.



UNLESS OTHERWISE SPECIFIED: DIMENSIONS ARE IN MILLIMETERS	FINISH:	DEBURR AND BREAK SHARP EDGES	DO NOT SCALE DRAWING	REVISION
	None		Dylan Holtzhauer	
Comments: Thickness of the sheet metal: 16 gauge or 1.52mm K-factor: .5 Inner bend radius: 1mm	TITLE:			A3
	Ejection Side Receiver			
MATERIAL:	DWG NO.	SCALE: 1:1		SHEET 1 OF 1
1018 Steel				
WEIGHT:				

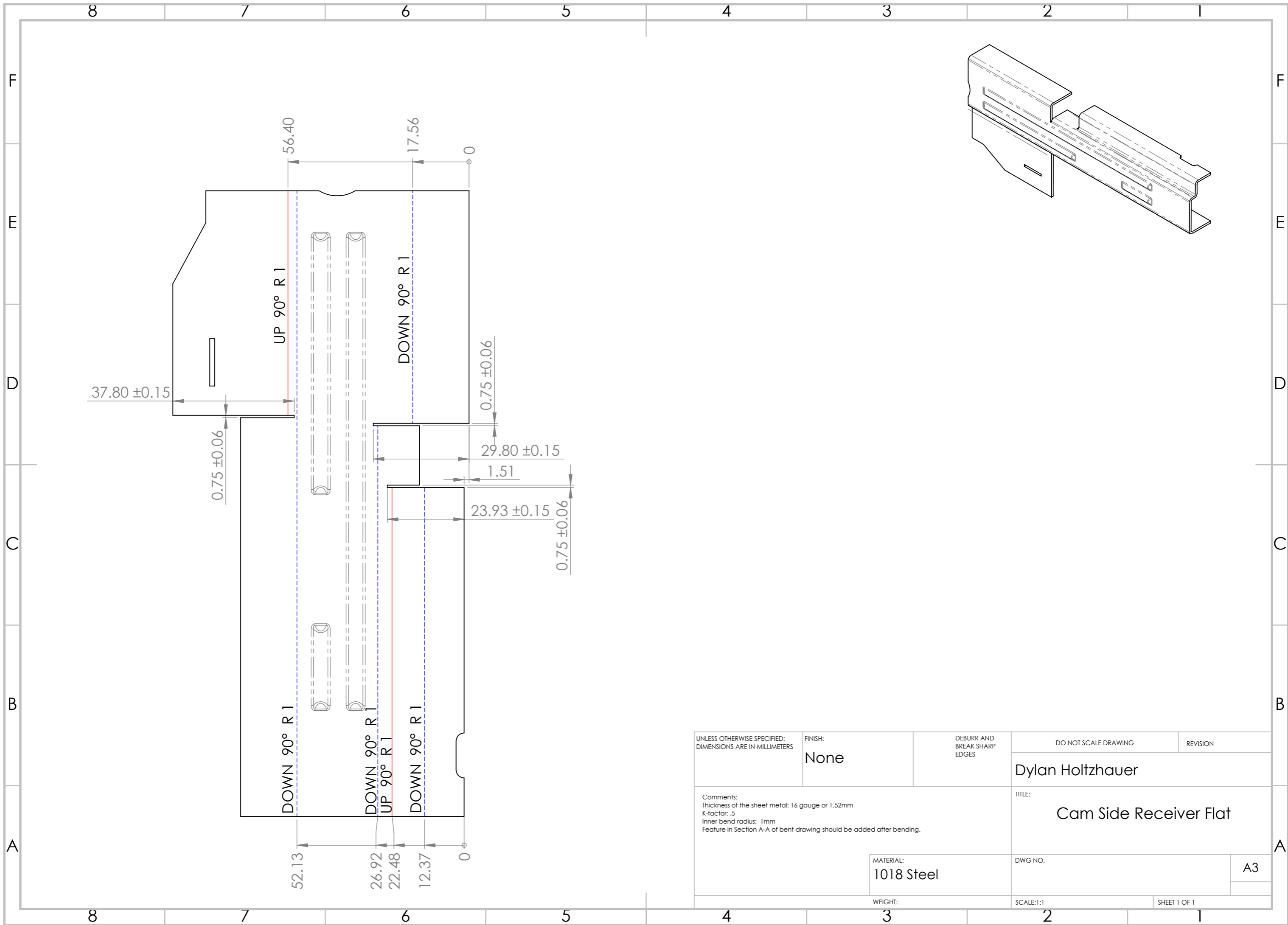


For the ribs along the side of the part, the only important dimensions are the outside height and width (1), their horizontal points (2) and their termination points from the end. It's also important there are no sharp edges on the outside.

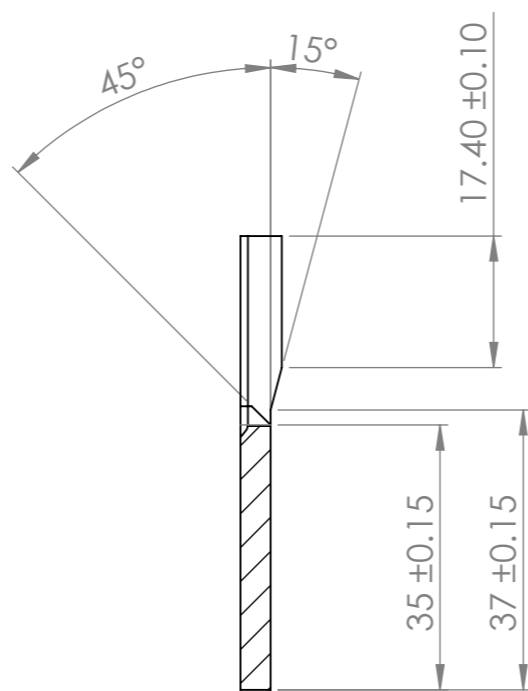
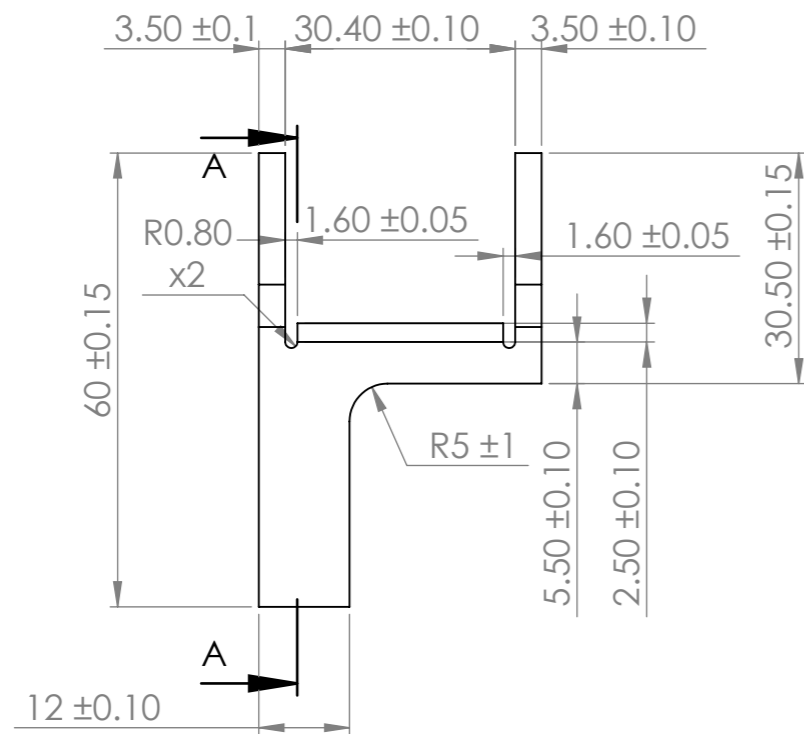
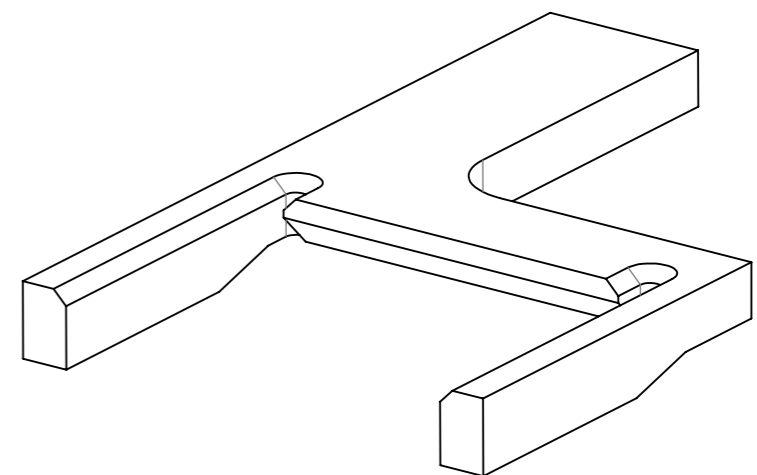
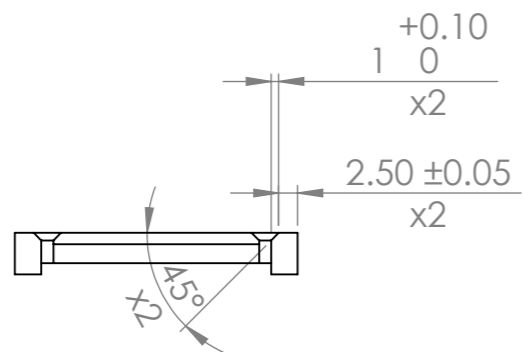


SECTION A-A

UNLESS OTHERWISE SPECIFIED: DIMENSIONS ARE IN MILLIMETERS	FINISH: None	DEBURR AND BREAK SHARP EDGES	DO NOT SCALE DRAWING	REVISION
			Dylan Holtzhauer	
Comments: Thickness of the sheet metal: 16 gauge or 1.52mm K-factor: .5 Inner bend radius: 1mm Cutout dimensioned in Section A-A should be cut after bending due to a cut through the bend.			TITLE: Cam Side Receiver	
			MATERIAL: 1018 Steel	DWG NO.
WEIGHT:			SCALE:1:1	SHEET 1 OF 1

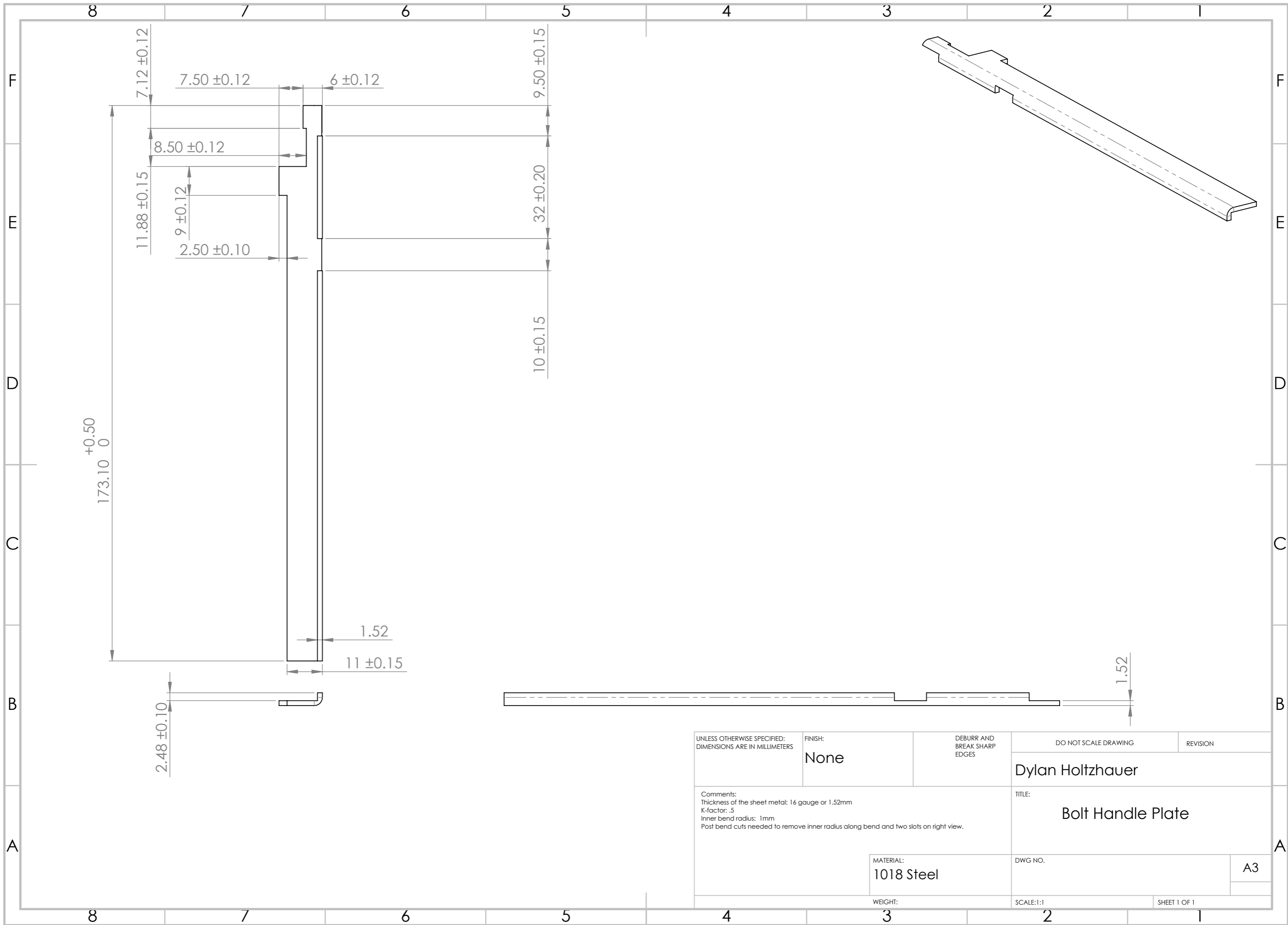


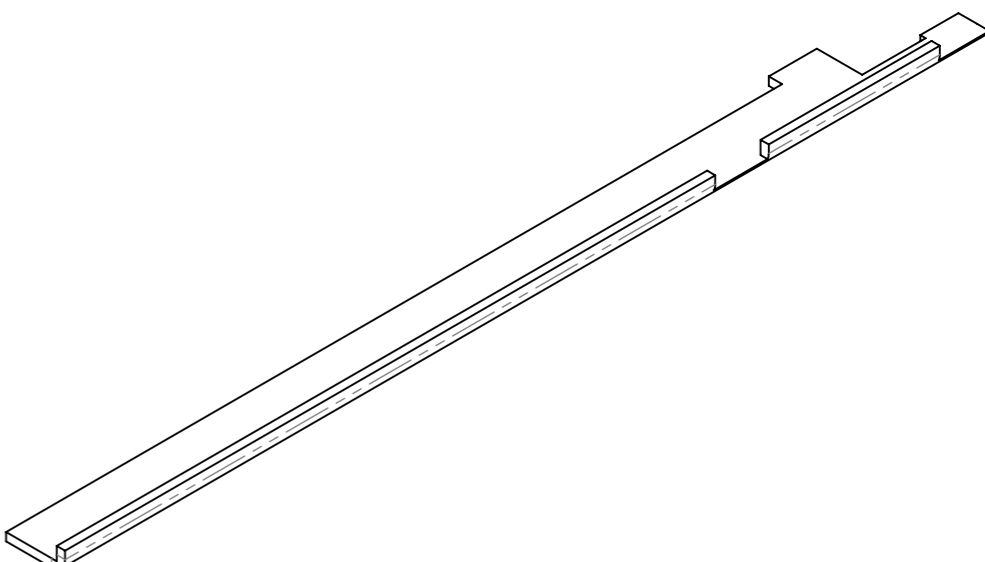
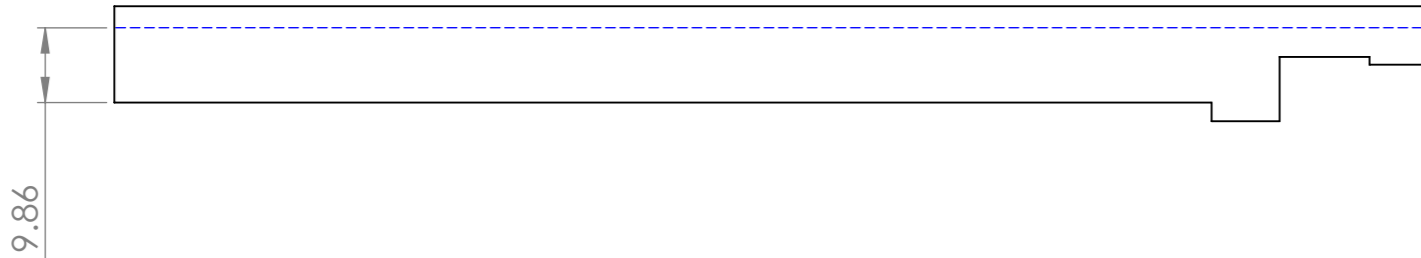
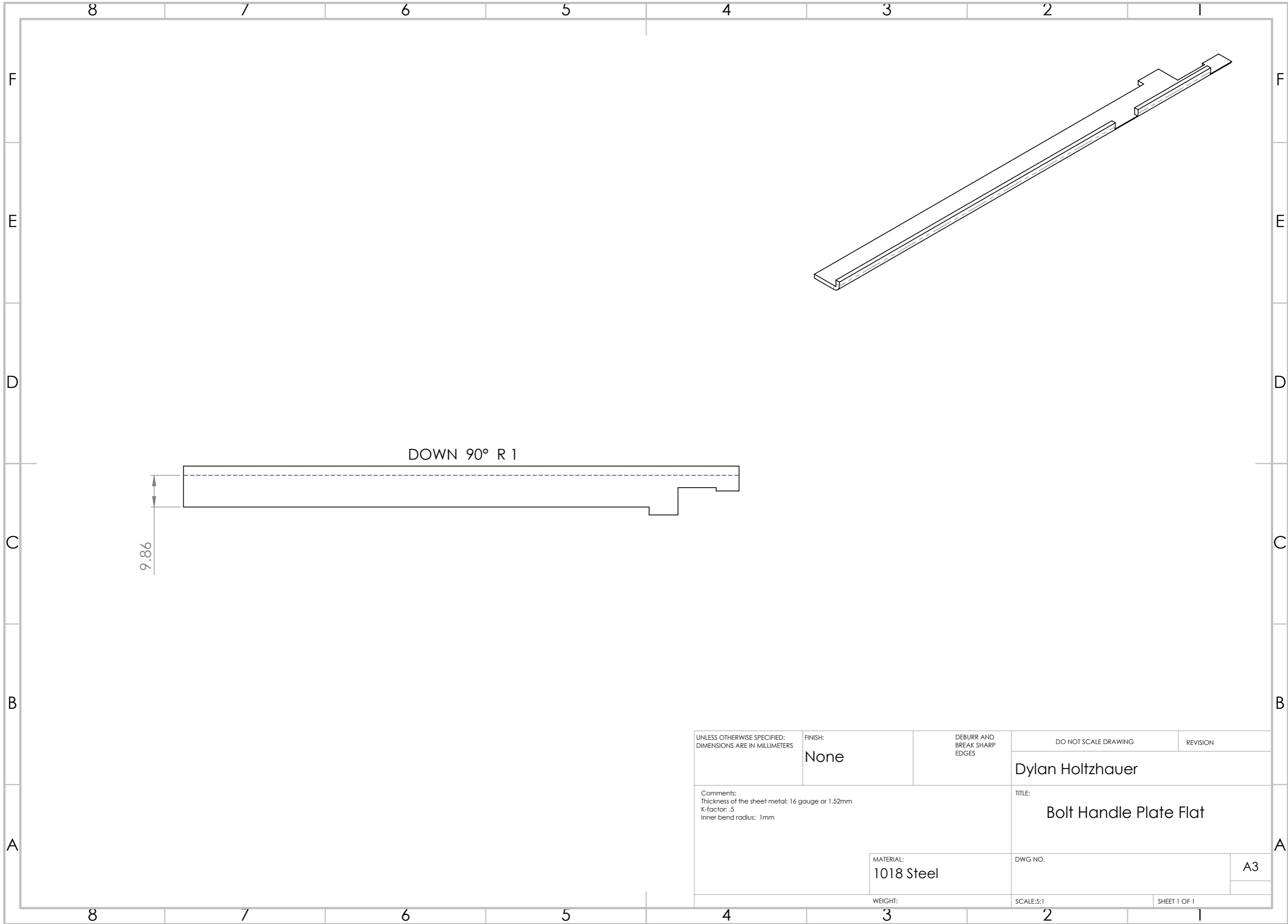
UNLESS OTHERWISE SPECIFIED: DIMENSIONS ARE IN MILLIMETERS	FINISH: None	DEBURR AND BREAK SHARP EDGES	DO NOT SCALE DRAWING	REVISION
			Dylan Holtzhauer	
Comments: Thickness of the sheet metal: 16 gauge or 1.52mm K-factor: .5 Inner bend radius: 1mm Feature in Section A-A of bent drawing should be added after bending.			TITLE: Cam Side Receiver Flat	
			MATERIAL: 1018 Steel	DWG NO.
WEIGHT:			SCALE:1:1	SHEET 1 OF 1



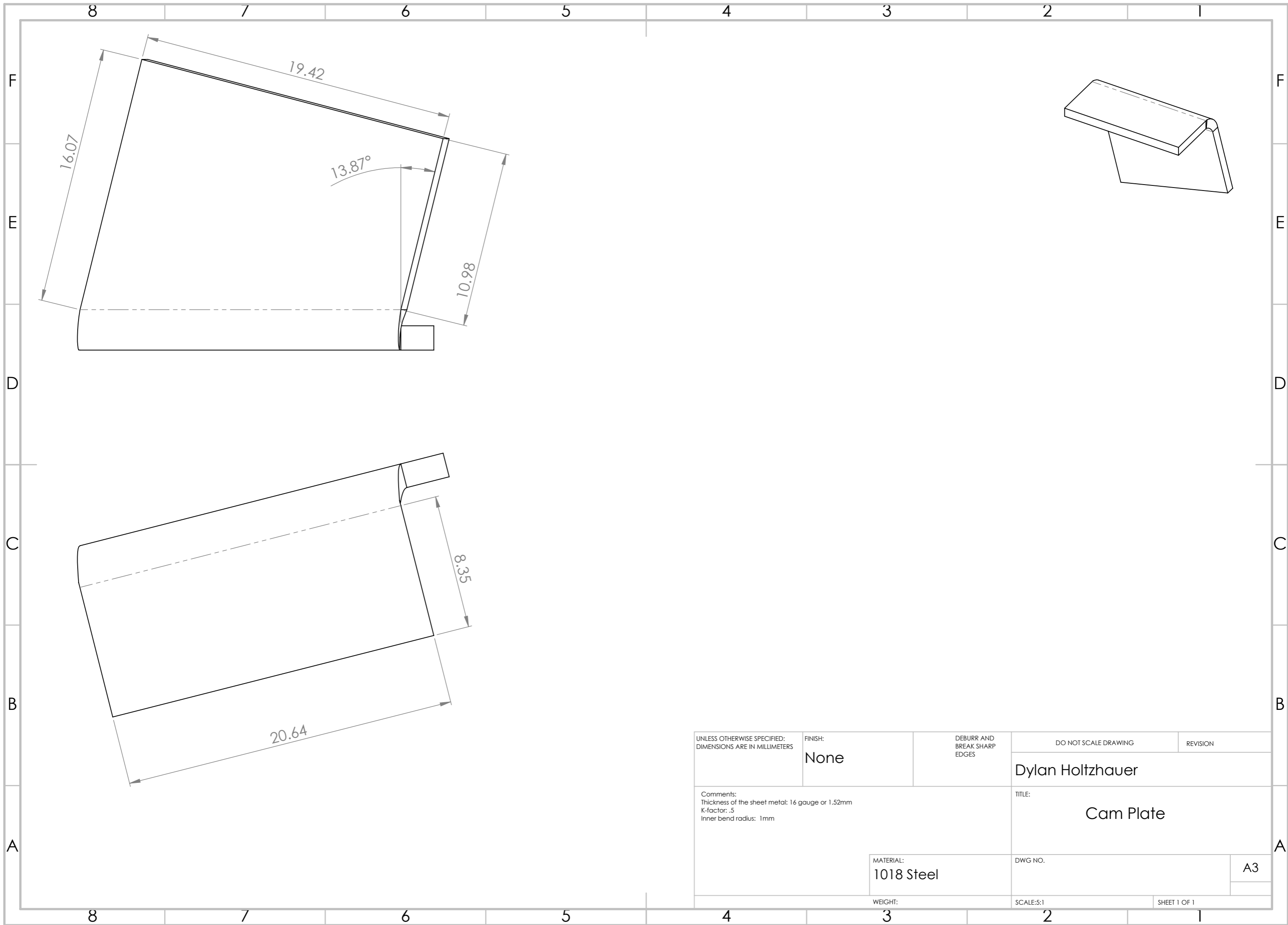
SECTION A-A

UNLESS OTHERWISE SPECIFIED: DIMENSIONS ARE IN MILLIMETERS	FINISH: None	DEBURR AND BREAK SHARP EDGES	DO NOT SCALE DRAWING	REVISION
			Dylan Holtzhauer	
Comments: If a dimension is not called, assume it is symmetrical with other dimensioned feature.			TITLE: Reinforcement	
			MATERIAL: Steel (Specify Type)	DWG NO. A3
WEIGHT:			SCALE:1:1	SHEET 1 OF 1

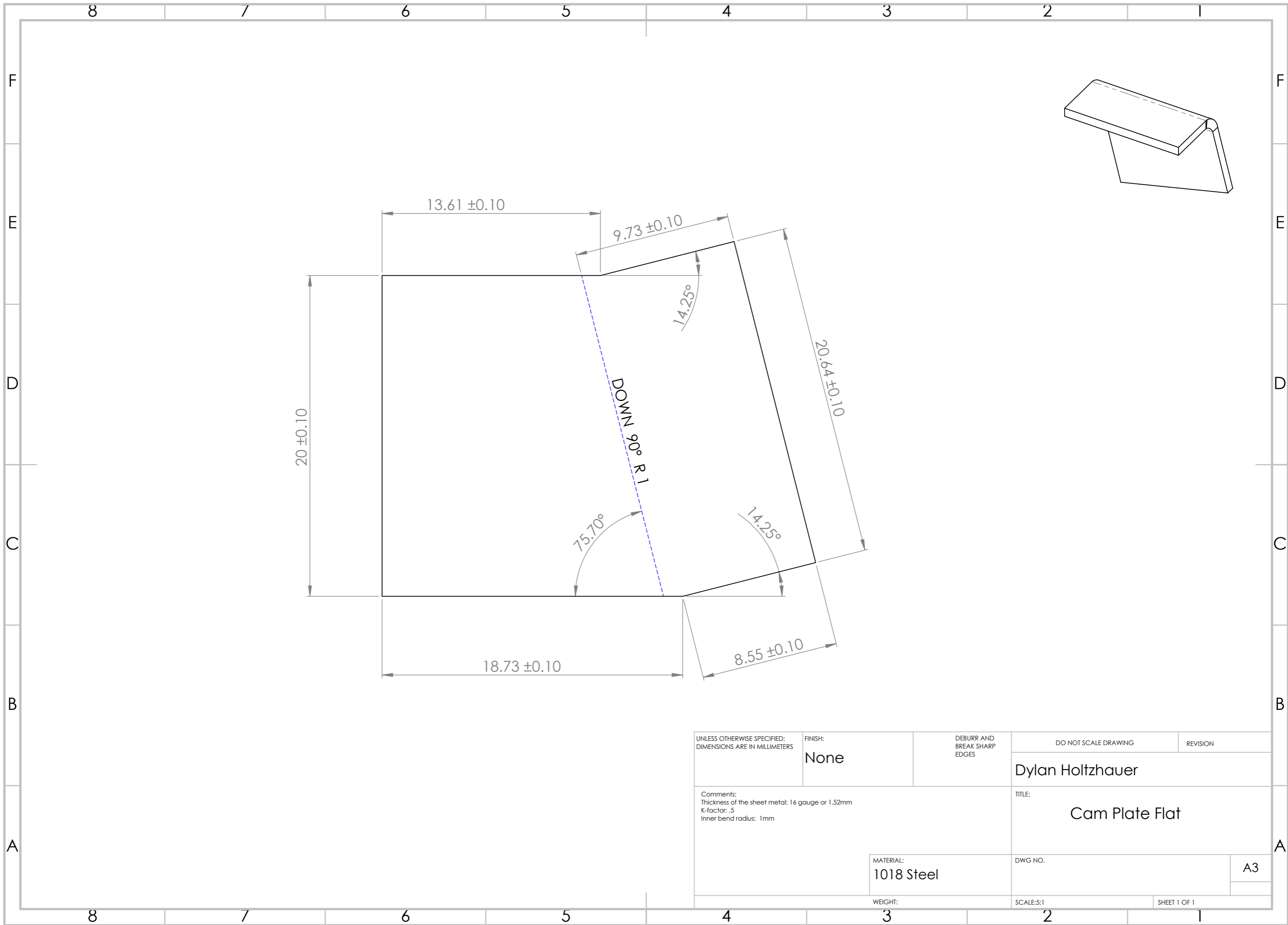




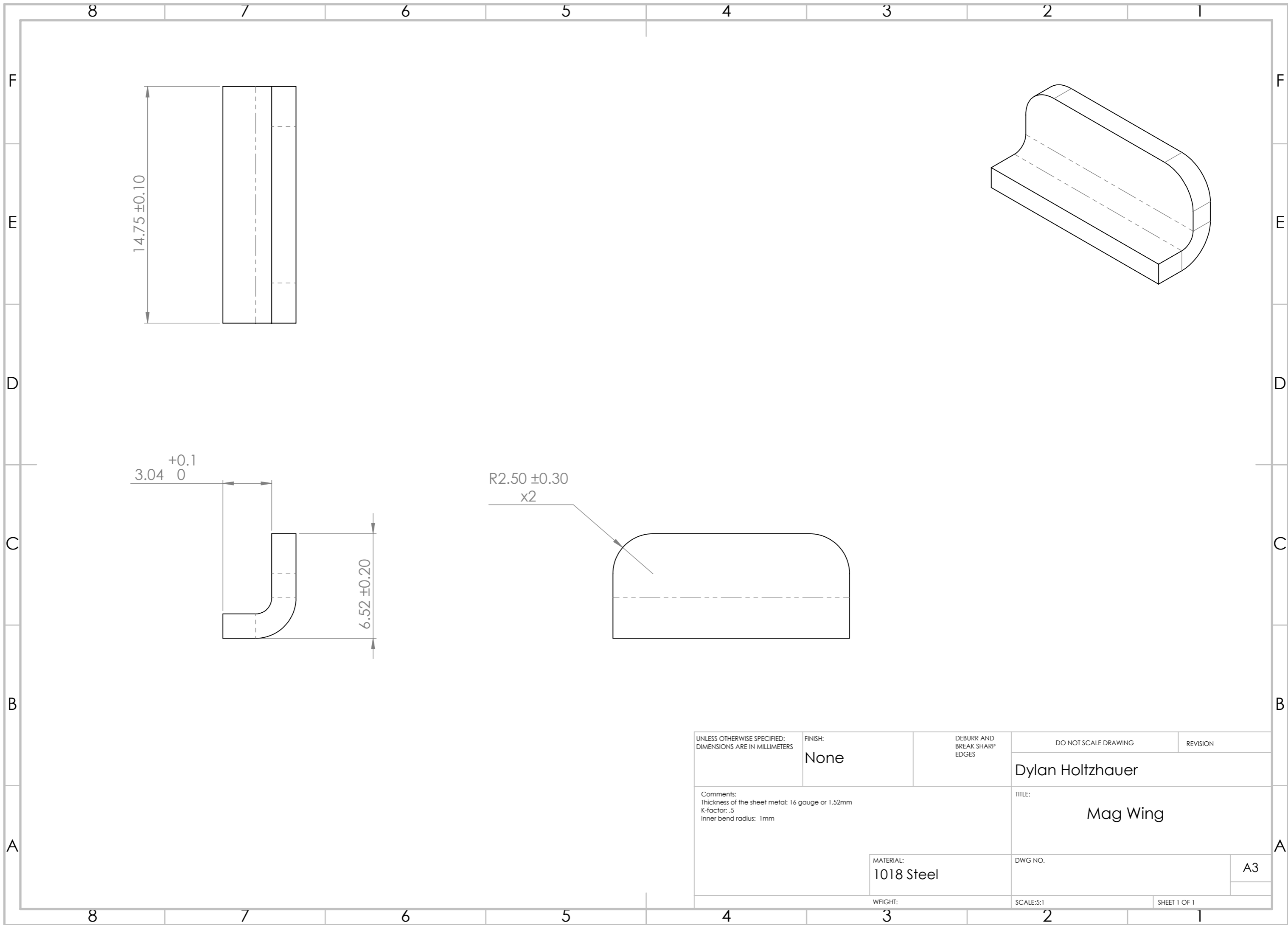
UNLESS OTHERWISE SPECIFIED: DIMENSIONS ARE IN MILLIMETERS	FINISH:	DEBURR AND BREAK SHARP EDGES	DO NOT SCALE DRAWING	REVISION
	None		Dylan Holtzhauer	
Comments: Thickness of the sheet metal: 16 gauge or 1.52mm K-factor: .5 Inner bend radius: 1mm			TITLE: Bolt Handle Plate Flat	
MATERIAL: 1018 Steel			DWG NO.	A3
WEIGHT:			SCALE:5:1	SHEET 1 OF 1



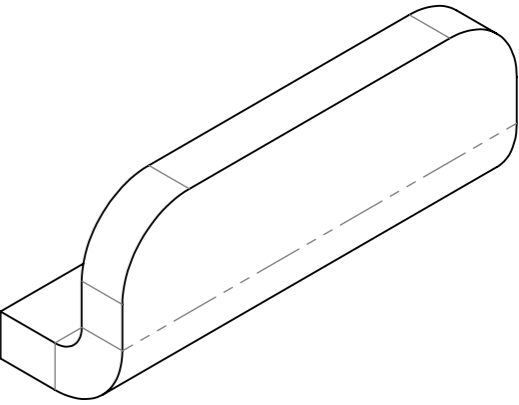
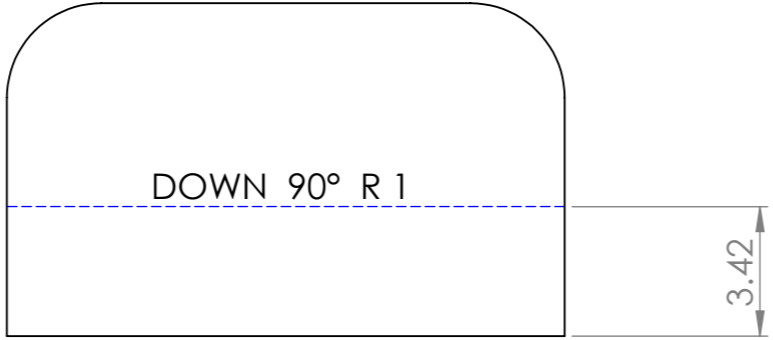
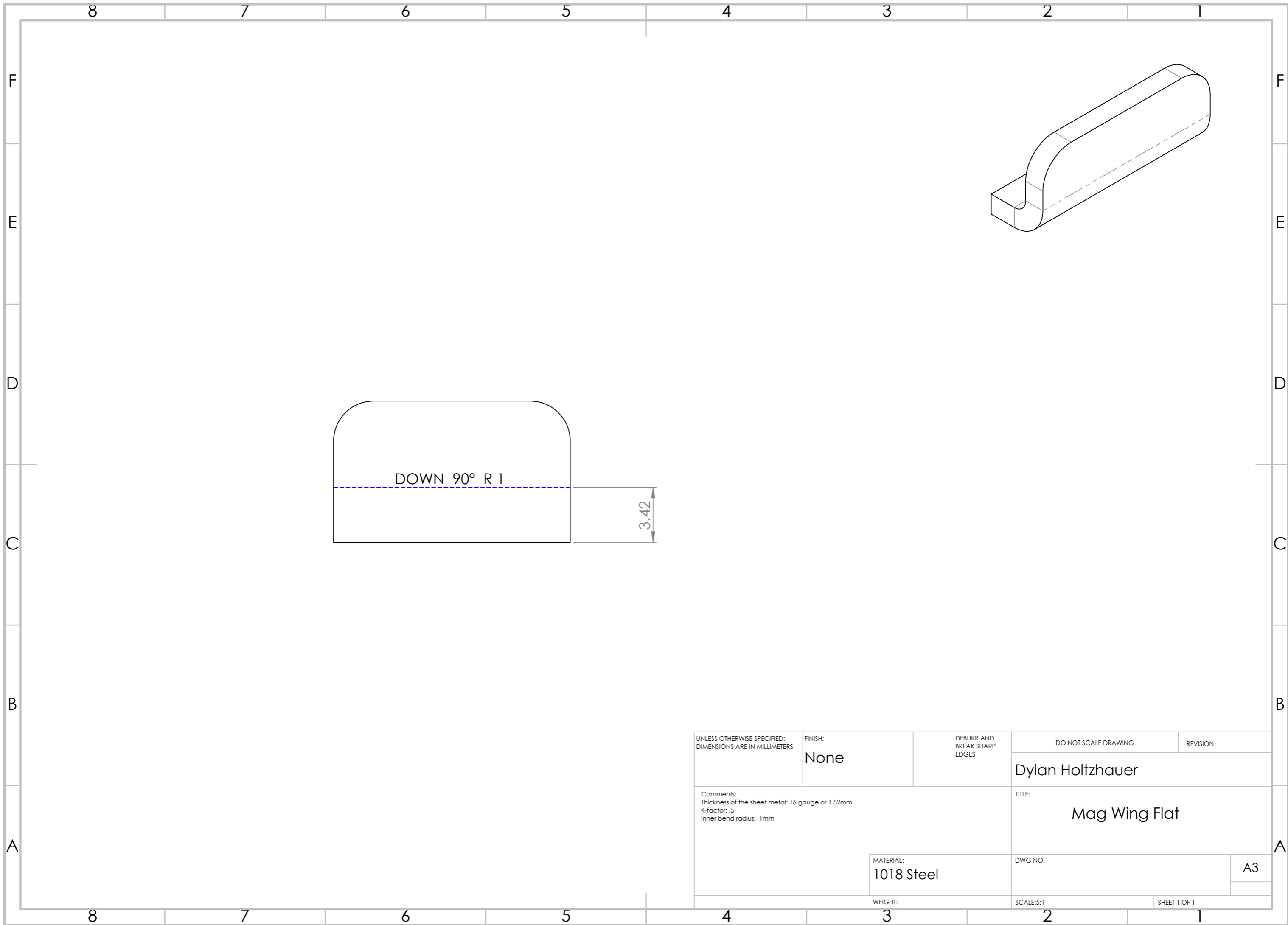
UNLESS OTHERWISE SPECIFIED: DIMENSIONS ARE IN MILLIMETERS	FINISH:	DEBURR AND BREAK SHARP EDGES	DO NOT SCALE DRAWING	REVISION
	None		Dylan Holtzhauer	
Comments: Thickness of the sheet metal: 16 gauge or 1.52mm K-factor: .5 Inner bend radius: 1mm	MATERIAL:		TITLE:	
	1018 Steel		Cam Plate	
	WEIGHT:	DWG NO.	A3	
		SCALE:5:1	SHEET 1 OF 1	



UNLESS OTHERWISE SPECIFIED: DIMENSIONS ARE IN MILLIMETERS	FINISH:	DEBURR AND BREAK SHARP EDGES	DO NOT SCALE DRAWING	REVISION
	None		Dylan Holtzhauer	
Comments: Thickness of the sheet metal: 16 gauge or 1.52mm K-factor: .5 Inner bend radius: 1mm			TITLE: Cam Plate Flat	
MATERIAL: 1018 Steel		DWG NO.	A3	
WEIGHT:		SCALE:5:1	SHEET 1 OF 1	



UNLESS OTHERWISE SPECIFIED: DIMENSIONS ARE IN MILLIMETERS	FINISH:	DEBURR AND BREAK SHARP EDGES	DO NOT SCALE DRAWING	REVISION
	None		Dylan Holtzhauer	
Comments: Thickness of the sheet metal: 16 gauge or 1.52mm K-factor: .5 Inner bend radius: 1mm	TITLE:		Mag Wing	
	MATERIAL:	DWG NO.	A3	
	WEIGHT:	SCALE:5:1	SHEET 1 OF 1	



UNLESS OTHERWISE SPECIFIED: DIMENSIONS ARE IN MILLIMETERS	FINISH: None	DEBURR AND BREAK SHARP EDGES	DO NOT SCALE DRAWING	REVISION
	Dylan Holtzhauer		TITLE: Mag Wing Flat	
Comments: Thickness of the sheet metal: 16 gauge or 1.52mm K-factor: .5 Inner bend radius: 1mm		MATERIAL: 1018 Steel	DWG NO.	A3
		WEIGHT:	SCALE:5:1	SHEET 1 OF 1